

# HOKOTEHI

MORIURI UNITY AND DEVELOPMENT



NEWSLETTER | TUMATEHAEA (MAY) 2022

*Ta imi Moriori, tēnā kotou, hokomenetai me rongō.  
Ka nui te mihi ki a kotou kā hūnau Moriori.*

## FAREWELLS

Moe mai kā mae Moriori, moe mai takoto mai. Our deepest sympathies go out to all those who have lost loved ones in the last few months.



### MIRIAMA TEOKIEKIE HAMMOND

It is with great sadness that we share news of the passing of Miriama Teokiekie Hammond who died Saturday 12th March.

Miriama was a leader in the Wairoa community, Chairperson of the Wairoa Taiwhenua and a pou pou for Moriori Karauria members. She became a champion for the revival of ta rē Moriori – staunchly supporting Kiwa to deliver the language webinar and promoting the revival of Moriori culture and identity.

Our hearts go out to Kiwa, Hinerangi and all the mokopū of Miriama as well as the wider hūnau of Karauria descendants. She is so dearly missed.

*E tahi, e tahi koi i runga*

*Ta ihi o ta rā*

*Ta werowero i ta ata*

*He mokopu o Rongomaiwhenua o Rongomaitere*

*He mokopu o Karauria hoki*

*Takoto i runga i to waka karāpuna*

*Here, here, here atu rā ireiki ireiki Miriama*

*laroha me rongō*



## MORIURI CALENDAR

The Moriori saying for this month, Tumatehaea, is *Ka mea ano ia ka waru au. Ko ro me i mea ai rau' ko Kahu no ro me ke put' ei raūū. Ku mu i te kiato hokotiko hoki na ratau.*

He said I am eight. The reason why he and Kahu said this was that they two might surpass their following. It was an argument of theirs.

## FROM OUR CEO



Kioranga hūnau,

Looking around the island at the work of your team you can be proud of their efforts. From North to South and with input from staff based in NZ the work of Hokotehi Moriori Trust with a focus on Moriori revival is going very well. With support from the Board, we have

been able to invest in buildings renovations that make a real difference to how we look after people, together with buying vehicles and equipment that will enable better productivity through less downtime.

A significant milestone has been reached recently on Kaingaroa Station with two initiatives that reflect real progress on the regenerative journey we are on. The first can be seen at the Hapūpū runway where the farmers are break-feeding cattle. This brings animal impact to concentrated areas of pasture that has a fertilising impact and has not been possible until recently following significant investment in fencing. The second step forward can be seen with small green shoots sprouting in what was a fern block that has been recently fenced, grazed hard and then sown with a seed mix designed to bring diversity and improve soil health. Again this has been possible with fencing infrastructure which across the farm is giving us a 40-day rotation. Not yet to the 90 days we would like to see, but great progress nonetheless.

We continue to extend manawarekatanga at the Lodge for the Downer crew through catering and accommodation for their team working on the airport rebuild. We get regular positive comments about how much a home from home the Lodge has become for so many.

Covid-19 has brought a strange old time to the marae, with almost all bookings cancelled. One booking that did proceed resulted in a hūnau group being isolated at the marae with a positive case among their number. Notwithstanding: the Marae is being kept warm and is in great condition for the other side of this pandemic.

Please welcome Ashleigh Ryan who has taken up the part-time communications role with us and is based at the Marae with Loretta. She joins her husband Duncan with their daughter Rosie at the Marae house that Duncan is continuing to renovate. They are loving living on a building site! Watch out for improvements on our website and for some exciting communications to come.

**Me rongo,**  
**Tony Blackett**



## RANGA MORIORI – WEAVING WĀNANGA

Join Deborah Goomes for weekly weaving wānanga, every Sunday till the end of July 2022.

These wānanga are open to anyone who wishes to take a journey of weaving and create miheke (a treasure).

### DETAILS:

**Date:** Sunday 29th May 2022,  
(then every Sunday till end of July)

**Time:** 9.30am – 3pm

**Where:** Kopinga Marae

### WHAT TO BRING:

- Your weaving and any resources
- Your lunch
- Your kids
- Your ideas and creativity!

Create a new piece or add to a current project in a relaxed and flexible atmosphere, suitable for both beginners and experienced weavers alike.

In addition, Deborah will be delivering two components of the 'Ranga Moriori Program'.

Creating kura including Moriori stories, karakii associated with kura (kura – Moriori feathered headress) and creating putē a kura, a woven purse to keep your kura in.

We look forward to seeing you.

*If you have any queries regarding these workshops, contact Deborah on 027 384 4866.*

## WIND FILTER PROJECT

April was a busy month for our biodiversity team, with the rebuild of the 200m long Taia wind filter.

The filter provides critical shelter to protect Rākau Momori within the kōpi groves, preventing the devastating effect the island's harsh winds have on the trees. The filter was in a particularly bad state of disrepair due to the high exposure that the structure suffers from the salt-laden North Easterlies that blow directly in from Hansons Bay.

Specialist contractors were flown in from the North Island, and using the donated telehandler and operator from Downers staff here on Rēkohu, our team spent three weeks rebuilding the wind filter with new stainless steel guide wires and mesh cloth.

We expect that this rebuild will now see the wind filter through until the planting work that we are undertaking over the next few years will have grown enough to protect the kōpi groves.



## WELCOME TO THE TEAM

In April we welcomed our new Tchieki Communications, Ashleigh Ryan, to the HMT team. Ashleigh has come from an extensive background in media and was previously working for a design studio in Christchurch.

Her husband Duncan is a born-and-bred Chatham Islander who took up our Tchieki Property role last year, and the pair moved back to the island with their young daughter, Rosie, in tow.

Ashleigh has a number of larger projects to focus on over the next few months, as well as taking over our newsletter and a lot of our social media work.

While trading her morning cappuccinos and silk shirts for gumboots and a Swanni, she is excited to lend her skill set towards the revitalisation of Moriori language and culture, and for her daughter to grow up immersed in Moriori life.

*If you have Moriori news you'd like us to share, email her at [ashleigh@kopinga.co.nz](mailto:ashleigh@kopinga.co.nz).*

## DOWNER AT HENGA LODGE

The Lodge is still a hive of activity, housing and catering for upwards of 42 Downer personal at times, on top of the usual everyday upkeep and some small maintenance upgrades we have on the go. While the lodge only sleeps 24, our staff also cater for some of the rental houses that Downer also occupy.

A barge has just departed the island for the mainland, taking with it some Downer gear, so we will see our guest numbers dwindle for a short time while we catch our breath, then it's back to full capacity when a new crew arrives to do the road and sealing side of things.

What an absolute pleasure it is, to be a part of this historic event on the Chathams, and to get to know all the faces that have worked on the airport runway extension. The Downer crew work long hours, so it's nice to know we can provide a morale boost and a comfortable second home while they are away from their families. The guests are nothing but kind, lovely people, with great personalities and some characters to boot! We will be sad to bid them farewell, but wish them the best on their next adventure.

We have an excellent team on board here, continuing to do a wonderful job even when our staff numbers have been affected by Covid. There's always someone willing to jump in to fill in the gaps and keep the place running like a well-oiled machine. It is very humbling to see and be a part of, and we thank each and everyone of them.

Me rongo,  
Heidi Lanauze  
Tchieki Lodge

### WHAT DOWNER IS SAYING

*"Set amongst a working farm next to an amazing DOC block. Henga lodge is a beautiful location for accommodation with great outdoor areas for me to sit and enjoy the surrounds from every angle."*

*"The staff were amazing, polite and friendly, and were always happy to go above and beyond whether it was extra towels or specific dietary requirements. For me in particular wanting to explore the island, their local knowledge was so informative and they always knew who to talk to when I wanted to get off the beaten track."*

*"Overall, the 6 months spent living there has been carefree and you all have really made it feel like my home away from home."*



## THE SKY'S THE LIMIT

With the completion of the boundary fence between Kaingaroa Station and Wairua, a decision had to be made on what to do with the resident wild cattle population. With a visiting helicopter and its pilot having some downtime between spraying jobs across the island, we commandeered him to help us either round the beasts up, or push them around the fence end before erecting the lake fence tie-off.

The chopper was perfect for flushing the cattle from hiding in the high lake rushes. The open area we had originally planned to push the cows through proved difficult to hold them in position because the helicopter had too much area to cover, so we decided to push them around the fence end before completing the tie-off. Overall, it was a relatively successful mission, even though the vigorous movements of the chopper caused one passenger to lose the contents of their breakfast.

After the mustering was done, we got the pilot over to Henga Lodge, to help us place some water tanks too large to move by vehicle through the existing gateways, and without clearing a path through the regenerating kopi forest.

We are lucky to have been able to time the helicopter's arrival with this work and get some tricky jobs ticked off our list.

Me rongo,  
Levi Lanauze, Tchieki Farm and Forest and Duncan Ryan,  
Tchieki Property

## FISHING UPDATE

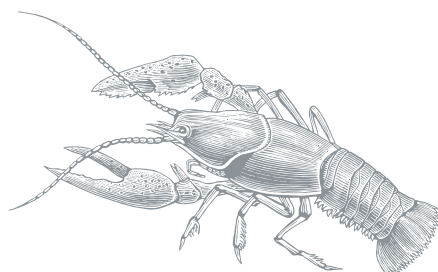
Driving around Rēkohu the cray-fishers are seen busily preparing for their new season and we wish you all well. You will know that the Chinese market for crayfish is incredibly important to us and we have been watching nervously as China has been having lock downs generating less demand over recent weeks. Here is a paraphrased update from Port Nicholson fisheries who process HMT quota and I hope that you can see the light at the end of this tunnel.

Official Covid daily case numbers are falling in Shanghai and being tightly managed at low numbers in Beijing. There are also signs of a slow shift toward pragmatism in China's fight against Covid. On the weekend, Chinese Premier Li Keqiang warned of a "complicated and grave" employment situation as Beijing and Shanghai tighten curbs on residents. He went on to say that local administrations should prioritize measures to help businesses retain workers. Their concern will be equal measure social stability as well as economic health. While this public acceptance of the economic challenge bodes well for better policy, it's still some way from relaxing the hard line on Covid. In a meeting led by Xi Jin Ping last week, it was reiterated that the authorities would "fight against any speech that distorts, questions or rejects our country's Covid-control policy." This is a reference to the mounting anger and disillusionment of Shanghai residents and those in many other cities that have experienced Covid restrictions. The authorities seem to have taken that to heart, deploying less heavy-handed tactics in Beijing. Results so far look better than Shanghai's, but if Beijing becomes the model for Covid control in other cities, minimizing contacts while keeping productivity high will become the norm, ie. as much work as possible with minimal socializing. We, therefore, expect dining out to be restricted or very limited for a while yet.

AA, A & B are popular grades at the moment. There is even some demand for larger fish D & E-. However, there is pressure on our C size due to an oversupply to the market from Australia, through the grey channel offering at low prices for all sizes, but the majority are B & C size. This week we have seen an increase in inquiries from our customers which is a positive sign. But, because the market is in a conservative and volatile state, it is very difficult to know what will happen next. So, all we can do is continue to monitor the situation while continuing to provide the best quality to our customers.

Once again, all the very best to fishers as you go about your work. Stay safe. – Port Nicholson

Me rongō,  
Tony Blackett  
CEO



## MEMBER SPOTLIGHT

This month Kōpinga Marae played host to hūnau visiting to plant trees at Manakau. Unfortunately they contracted Covid-19 during their stay and were forced to isolate. They penned this poem as an ode to their stay.

### AN ODE TO COVID AT KŌPINGA

While hūnau were on Rēkohu planting trees  
One of our workers started to sneeze  
Oh jeez...  
A RAT test was taken  
Tree planting forsaken  
It could not be mistaken  
Two lines had appeared  
Health measures adhered  
Our resident nurse now was revered  
While having to isolate for 7 more nights  
Now came the hassle of rescheduling flights  
Day 2 of covid had us looking like frights!  
We would have to stick to Kopinga's lawn  
But united together we were not forlorn  
We got to delight at the new days dawn  
Day 3 - Repeat  
Day 4 - Repeat  
Day 5 – At our hair we were beginning to claw  
Day 6 - Trying to adhere to Nunuku's Law  
Day 7 – A negative RAT test now we were sure.....  
AUE!! Day 1.....

By Erin, Di, Tane and kids



## HEALTHBOARD UPDATE

Kioranga kotou, we hope this newsletter finds everyone safe and well.

Information in this update includes:

- Notification of Positive RAT tests
- Re-infection with COVID- 19
- Winter Illnesses

### NOTIFICATION OF A POSITIVE RAT TEST

RATs are the quickest and easiest way to find out if someone currently has covid.

Covid is spread easily so it's important to notify the clinic on 035 (Chatham Islands) and isolate if you test positive for the virus. This allows health staff to support anyone currently positive and limit the potential for rapid spread throughout the community to vulnerable people.

A government financial support package may be available if you are isolating and unable to work with covid. Go to [www.workandincome.govt.nz/covid-19/leave-support-scheme](http://www.workandincome.govt.nz/covid-19/leave-support-scheme) to apply.

### REINFECTION WITH COVID

As more sub-variants of Omicron arrive into New Zealand, the risk of reinfection increases.

Wearing a mask, washing your hands and staying home when you're not well, reduce your chances of reinfection after you have had Covid-19. Getting Covid-19 more than once is possible and it is important you alert the health centre to any positive covid RAT results.

### WINTER ILLNESSES

Health experts are anticipating a harsh flu season.

Nobody will want a double whammy of Covid and flu together (or one after the other) and vaccinations for both are available at the clinic – just call ahead and book yourself a slot.

### AND FINALLY

Remember, if you have tested positive for Covid there's **no need to repeat a RAT test**. Doing more RAT tests does not change your isolation time if you then test negative (as you may still continue to be infectious even with a negative RAT) – what is important is to call the clinic on 035 (Chatham Islands) and isolate for 7 full days.

Thanks for your ongoing engagement, until next time.  
The Chatham Islands Health Team

## Protect yourself and your whānau this winter

If you're 65+, or 55 and over and Māori or Pacific, it's time to get your **FREE** flu jab



**FLU 2022**

## Bowel screening saves lives

*'We're doing this for ourselves and our whānau'*

Time to screen

National Bowel Screening Programme

My body, my health, my future



TO FIND OUT MORE GO TO [www.timetoscreen.nz](http://www.timetoscreen.nz)

Free phone **0800 924 432**  
or talk to your doctor

# BOOST CANTERBURY

Getting boosted is the best way to fight Omicron

## Do I really need a booster?

Getting your booster makes it less likely you'll get really sick with COVID-19, or pass it on. It is the best thing you can do to protect you and your whānau.

## How old do I need to be?

16 and 17 year olds are now eligible for boosters too. For you, it needs to be at least 6 months since your second dose.

## I've had COVID-19. Do I need to get boosted?

Yup, because you can get COVID-19 again! Boosters help protect you from future infections.

## I'm vaccinated. Why do I need a booster too?

After a while, your protection against the COVID-19 virus starts to drop away. The booster dose gives you added protection against Omicron.

## When do I need to have my booster?

If you are 18 or over and had your second dose at least 3 months ago, it's time to get your free booster vaccine.

## How long after infection should I wait?

You'll usually need to wait 3 months before getting any COVID-19 vaccination or booster.

**Getting your booster?** Tamariki aged 5 to 11 can get their COVID-19 immunisations with you.

Bookings available at the **Chatham Islands Health Centre**

Call **03 3050 035** to make your appointment.

**Canterbury**  
District Health Board  
Te Poari Hauora o Waitaha

**Unite  
against  
COVID-19**

## HENGA NURSERY TEAM LEADER

### JOIN OUR TEAM AND HELP US RE-CLOAK RĒKOHU

Under the 1 Billion Trees initiative, within the next five years, Hokotehi Moriori Trust aims to plant 210,000 trees over 210 hectares on Kaingaroa Station, situated in the North East corner of Chatham Island. Our goal is ecosystem restoration with the planting of primarily endemic tree and shrub species supporting bird life and diversity. The next phase of this project will see Henga Nursery expanded and in full-flight.

Reporting to our Tchieki Farm and Forest, the Nursery Team Leader will be responsible for producing tens of thousands of trees per year with output growing over time. You will be active with eco-sourcing for the propagation of plants including seed collection, harvesting of wildings for re-potting, propagation from cuttings and growing-on stems brought in from NZ. You may also be involved with planting and forest management.

#### WHO WE ARE LOOKING FOR

- You will have proven experience working in a horticulture/nursery environment
- You will have experience with seed collection and propagation methods
- You will have a strong focus on environmental controls, water management and plant health
- You will have the ability to make informed decisions, show initiative and work both independently and within a team environment
- You will have a capacity for physical work as some heavy lifting will be required
- You will possess excellent time management skills and ability to work within deadlines
- You will be resilient and able to easily adapt to this remote lifestyle

#### IN RETURN WE OFFER

- Competitive remuneration
- Accommodation and relocation assistance available to the right candidate
- A supportive and inclusive team culture
- Opportunity for ongoing professional growth
- Nursery is located at the entrance to picturesque and culturally significant Henga Scenic Reserve
- The opportunity to participate in making a real difference to our island's future

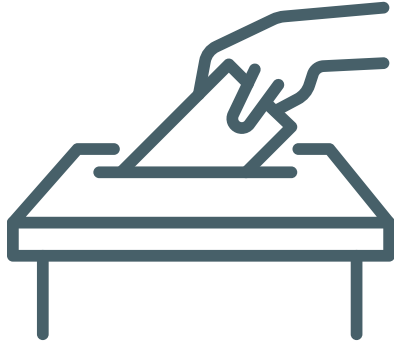
#### TO APPLY

If you feel you have the passion and vision to fit this role, please send your CV and cover letter to [office@kopinga.co.nz](mailto:office@kopinga.co.nz)

APPLICATIONS CLOSE 5PM, FRIDAY 3 JUNE







## AGM AND ELECTIONS ANNOUNCEMENT

### HOKOTEHI MORIORI TRUST INVITES YOU TO ATTEND THEIR 2022 AGM

A date has been set for this year's AGM, 25 October, and will be held in Christchurch. Last year's hui was cancelled due to Covid, and so we plan to present the financial report for 2020-2021 in addition.

### ELECTIONS ANNOUNCEMENT

The postponement of our AGM last year also meant the postponement of elections that were due. The roles currently occupied by Paul Solomon, Grace LeGros, Tom Lanauze and Maui Solomon are all due for election. Keep watch for announcements, candidate information and election processes to come.

## CONTACT US

### NEVER MISS A THING

Stay up-to-date with the latest Moriori news by following us on our socials, or heading to our website: [www.moriori.co.nz](http://www.moriori.co.nz).



Hokotehi Moriori Trust



\_moriori



Moriori

### HOKOTEHI MORIORI TRUST

P.O. Box 188, Rēkohu, Chatham Island 8942  
 P. 03 3050 450 or 0800 MORIORI  
 e. [office@kopinga.co.nz](mailto:office@kopinga.co.nz) w. [www.moriori.co.nz](http://www.moriori.co.nz)

*Hokomenetai me rongō*

## EDUCATION OPPORTUNITIES

### TE KEKE TURA MORIORI IDENTITY GRANTS

Thinking about your future direction? The growth of our young people is important to us. Hokotehi has education grants available that offer financial support to those in pursuit of tertiary and special education studies.

Grants for small projects such as weaving courses, language courses etc may also be available providing they meet the criteria as set out in the Te Keke Tura Moriori Identity Trust deed. Grant criteria and forms are available on our website [www.moriori.co.nz](http://www.moriori.co.nz) or by emailing [office@kopinga.co.nz](mailto:office@kopinga.co.nz).

## MEMBERSHIPS

### MAKING THE MOST OF YOUR MEMBERSHIP

To ensure you never miss any HMT news and opportunity, check your details are up to date.

- Are you receiving post and emails from us?
- Do we have your email address?
- Do we have your correct postal address?
- Do you have moko who have recently turned 18years old and are now eligible to vote?
- If you've had moko since registering, please let us know and we can easily add them to the database.

Contact us on **0800 MORIORI (667 4674)** or via email [office@kopinga.co.nz](mailto:office@kopinga.co.nz) if you need to update your details, or to request a membership form.

## KEEN TO LEARN TA RĒ?

Download our **FREE** Ta Rē Moriori language app for Android.

